



SHL Release Notes

14 June 2024

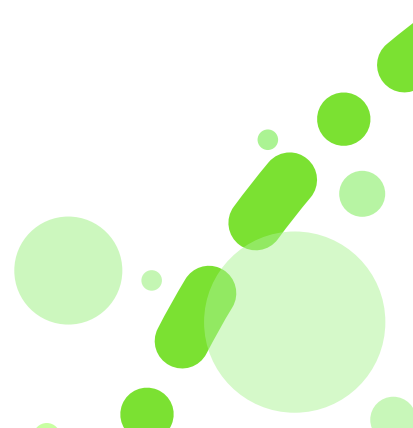
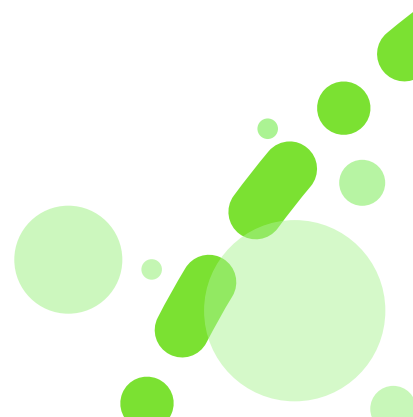


Table of Contents

Enhanced Universal Reporting Experience	3
Professional 8.0 JFA Release	7
Content Language Releases	11



Enhanced Universal Reporting Experience

We're excited to announce some enhancements to our reports designed to improve usability and efficiency!

1. Enhanced Report Navigation

Cover Page and Content Page: We've introduced cover pages and content pages for all PDF reports, allowing you to quickly grasp the report's content.

- The cover page will display the report name, or "Assessment Report" for reports containing multiple sections.
- Chapter-wise downloads will also have dedicated cover and content pages.



- The content page will include a table of contents (TOC) reflecting:
 - Personal details of the subject
 - Downloaded chapters (for chapter-wise downloads)
 - Glossary (if applicable)

Raju R
raju5010@abc.com

SHL

Table of contents

- 1 Personal details
- 2 Overall scores
- 3 Detailed scores
- 4 Insights
- 5 Interview prompts
- 6 Proctoring
- 7 Glossary

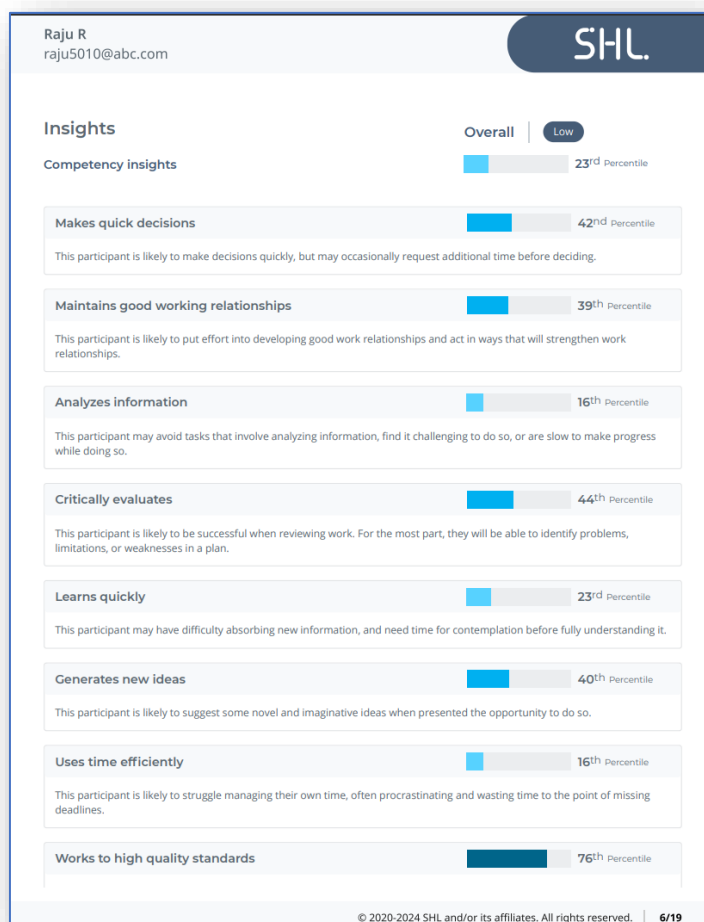
© 2020-2024 SHL and/or its affiliates. All rights reserved. | 2/19

2. Improved Score band Visualization:

Automatic Color Gradients: Score bars now utilize automatic color gradients! Select a color, and the system will generate a gradient of that color to represent different score bars within the report. This provides a clearer visual representation of performance levels.

How this works?

1. Score Bar color to be configured and read from central branding service.
2. The reporting system will automatically generate Gradient colour using solid colour that will be passed from central branding service.
3. In case, the branding is not set, the score bar color for the report should be the default score bar color configured in UR i.e. green TC+ theme and gradient of green color represent different score bars.



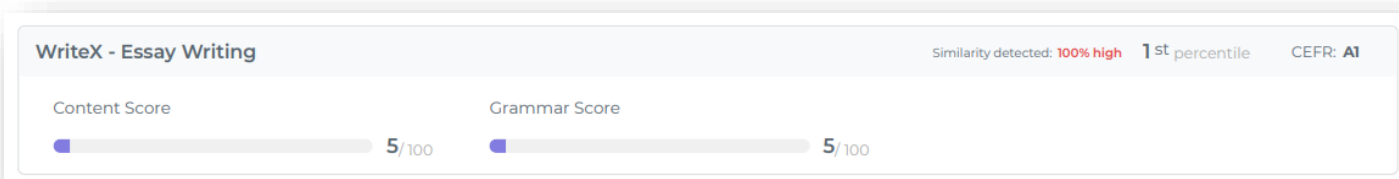
3. Highlighted Plagiarism Check (WriteX Only):

Prominent Similarity Detection: For WriteX reports similarity detection is now more prominent. The "Similarity detected" flag has been moved to key locations within the report, making it easier to identify potential plagiarism and determine a candidate's suitability.

This is implemented for both Universal reports and Reportica reports in their web and PDFs formats.

Refer images below displaying flag in the 'Summary', 'Insight', and 'Response' chapters.

Detailed chapter



Insights chapter

WriteX - Essay Writing 1/100 Low Similarity detected: 100% high

Content Score 5/100

The candidate's essay is off-topic and/or consists of less than 4 sentences.

Grammar Score 5/100

The essay is off-topic and/or consists of less than 4 sentences.

Response Chapter

Responses

WriteX - Essay Writing Similarity detected: 100% high 1/100 CEFR: **A1**

Question

In your opinion, when is it justified for a company to dismiss an employee? What are the considerations to be taken before making such a decision? Support your response with reasons and suitable examples.

Scores

Content Score 5/100 Grammar Score 5/100

Response

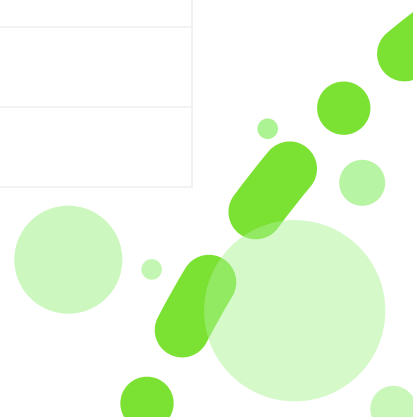
When it is said that you are dismissed it sounds very rude and also impacts the employee both financially and mentally. But there are some reasons when company can dismiss an employee

Error Summary

- Spelling 1
- White Space 1
- Style 0
- Grammar 4
- Typographical 0

These enhancements are designed to streamline your report experience and empower you to make informed decisions faster.

Platform:		Availability: 17 May 2024		
<input type="checkbox"/>	TalentCentral™	<input checked="" type="checkbox"/>	TalentCentral+™	
<input type="checkbox"/>	360/MFS	<input type="checkbox"/>	SHL Apps	
<input type="checkbox"/>	Insights			



Professional 8.0 JFA Release

We are excited to announce the launch of the Professional 8.0 Job-Focused Assessment (JFA). These are designed for all non-managerial professional/individual contributor positions. They measure behaviours that underlie successful performance in a professional/individual contributor setting across a wide range of industries.

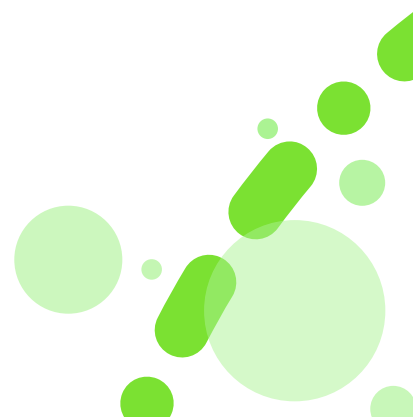
Potential job titles that use this JFA include:

- Engineer,
- Human resource consultant,
- Business analyst,
- Data scientist and
- IT analyst

Key Features:

- **Flexible Assessment Mix:** The Professional 8.0 JFA offers increased flexibility, allowing clients to choose right assessment solutions for their need. It integrates the Global Skills Assessment (GSA) with a new learning agility assessment, which is crucial for adapting to the rapidly changing job landscape.
- **Comprehensive Reporting:** Each JFA provides three types of reports – Recruiter, Interview Guidance, and Candidate – available both digitally and as PDF downloads.
- **Language Availability:** The new 8.0 JFAs and reports are accessible on the TalentCentral+ platform in both USE and UKE languages.

This latest version replaces the Professional 7.0 and 7.1 JFA offerings for new customers and is available as an upgrade for existing customers upon request.



Assessment

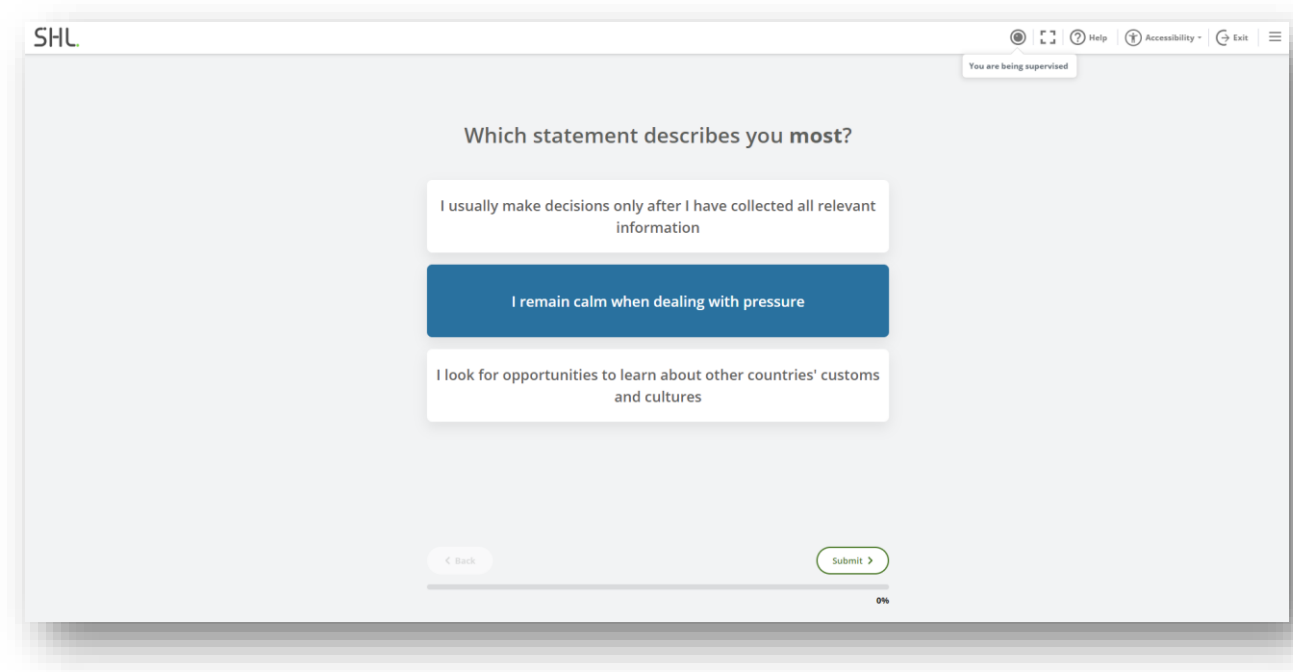


Figure 1 - Web Browser Experience

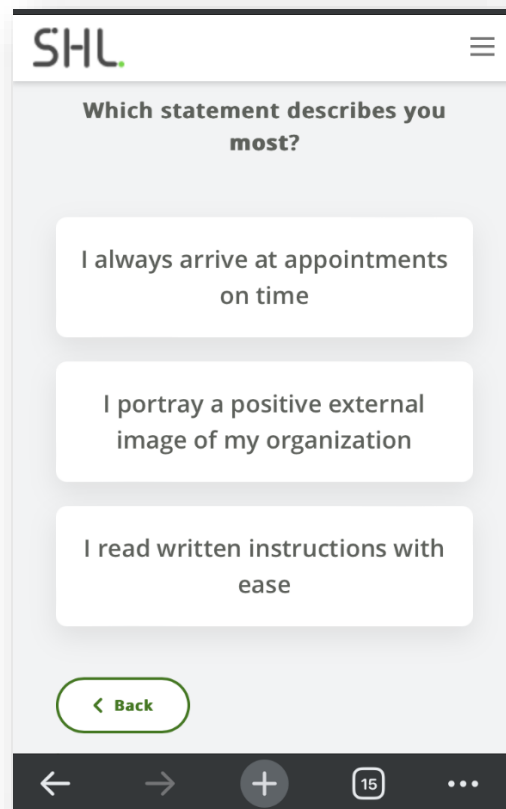
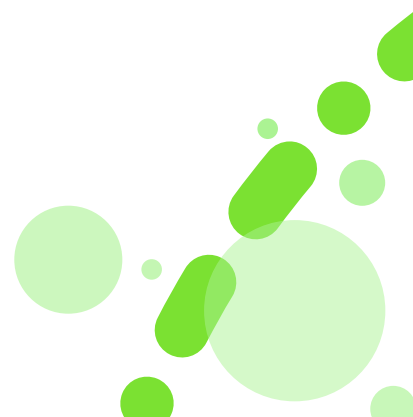


Figure 2 - Mobile Experience



Report

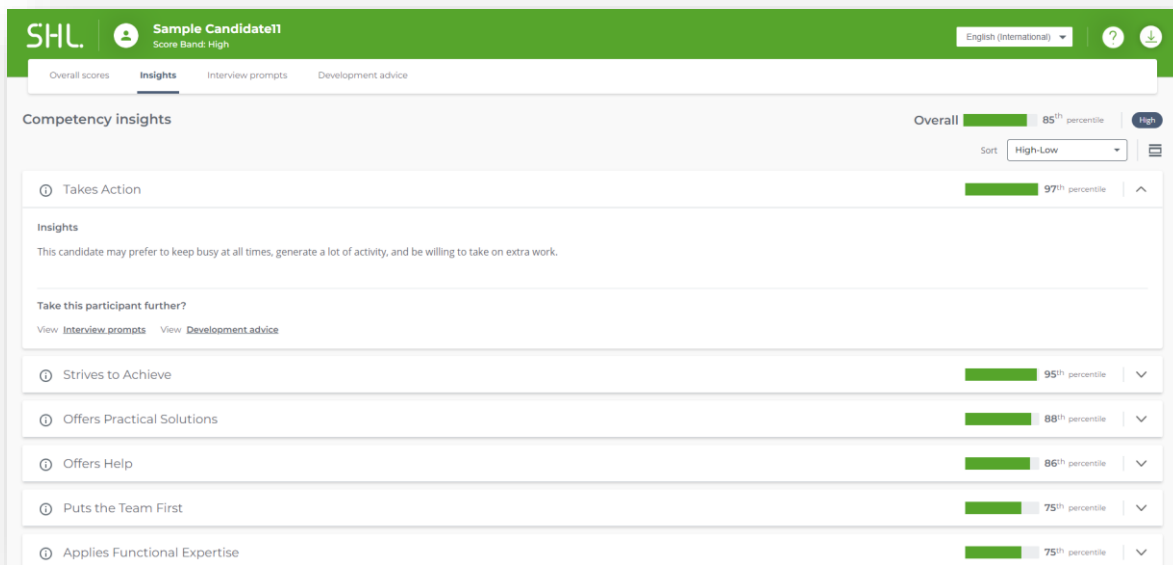


Figure 3 - Digital Report

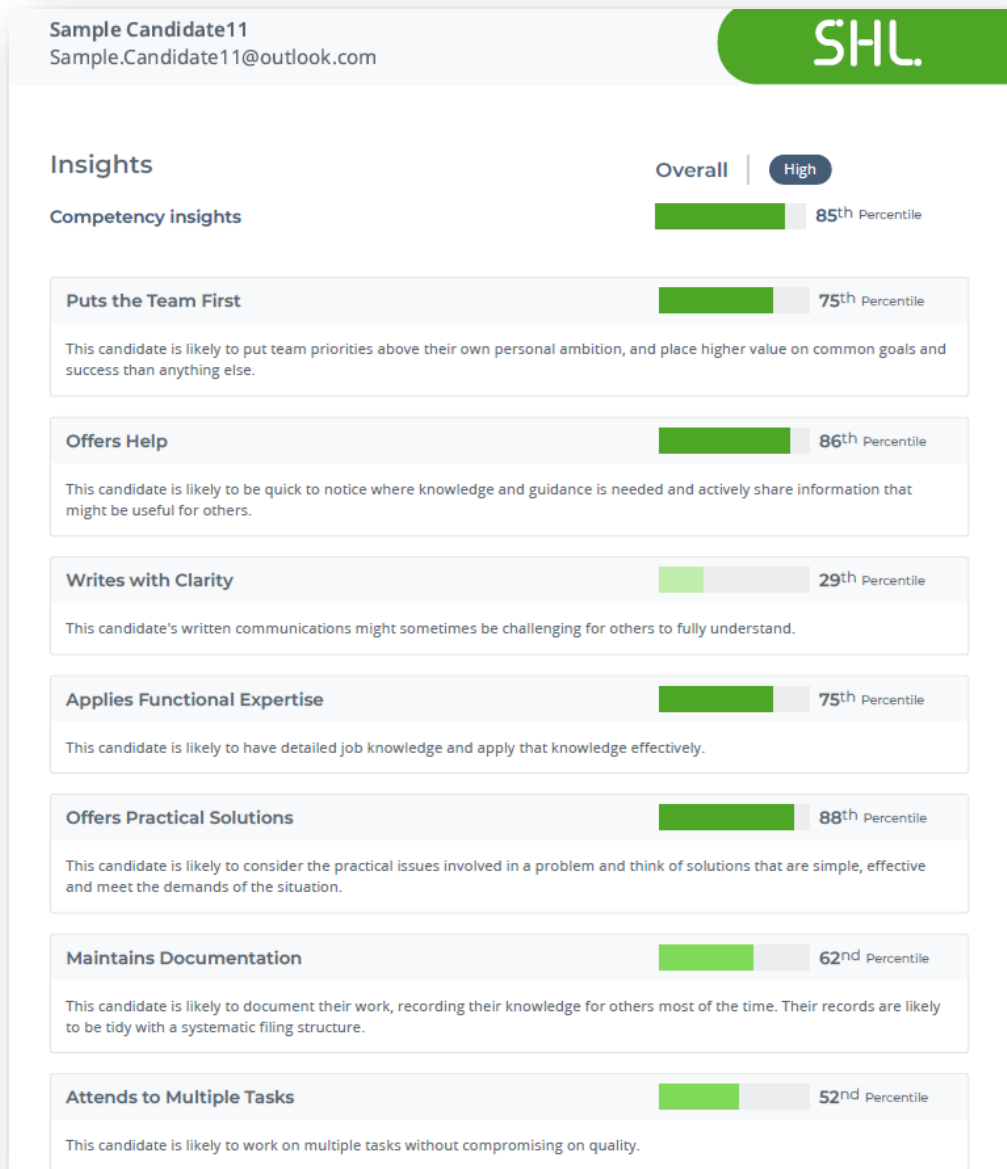
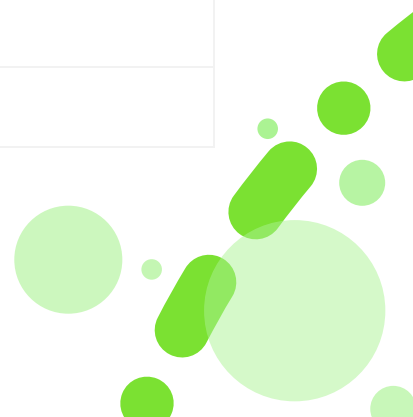


Figure 4 - PDF Report

Platform:		Availability: 10 June 2024	
<input type="checkbox"/>	TalentCentral™	<input checked="" type="checkbox"/>	TalentCentral+™
<input type="checkbox"/>	360/MFS	<input type="checkbox"/>	SHL Apps
<input type="checkbox"/>	Insights		



Content Language Releases

OPQ Report Rebuilds

Product	Language
OPQ32 Candidate Report 2.0	Norwegian
Unlocking Potential Report 2.0	Japanese
Universal Competency Report 2.0	Brazilian Portuguese

Verify Interactive

Product	Language
China Managerial/Professional Norm	N/A

JFAs

Product	Language
Graduate 8.0+ (South Africa Norm)	International English
Candidate Report	International English
Interview Report	International English
Detailed Report	International English
Graduate 8.0	Romanian
Candidate Report	Romanian
Interview Report	Romanian
Detailed Report	Romanian

Global Skills Assessment

Product	Language
Global Skills Assessment	Arabic Brazilian Portuguese Canadian French Simplified Chinese Traditional Chinese Danish US English Finnish French German Indonesian International English Italian Japanese Korean LA Spanish Dutch Norwegian Polish Portuguese Romanian Spanish Swedish Thai Turkish Vietnamese
Global Skills Development Report	US English

Platform:		Availability: 24 May 2024	
<input checked="" type="checkbox"/>	TalentCentral™	<input type="checkbox"/>	TalentCentral+™
<input type="checkbox"/>	360/MFS	<input type="checkbox"/>	SHL Apps
<input type="checkbox"/>	Insights		